



Kaimana Academy

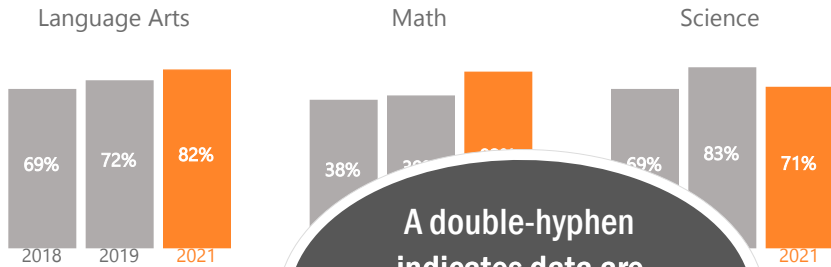
80-808 Aloha Avenue, Kaimana, Hawaii | Oahu | Aloha Complex Schools
2020-21 Strive HI School Performance Results

For more information on how these data were calculated, see the Strive HI Technical Guide.

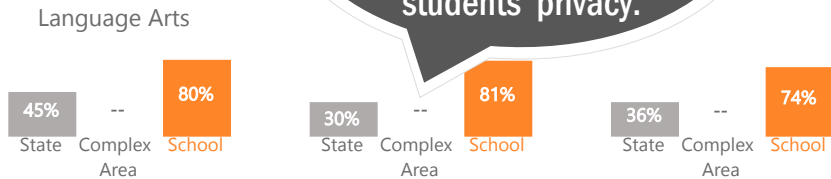


How are students performing in each subject?

Measures the percent of students meeting the standard/who are proficient on state assessments.

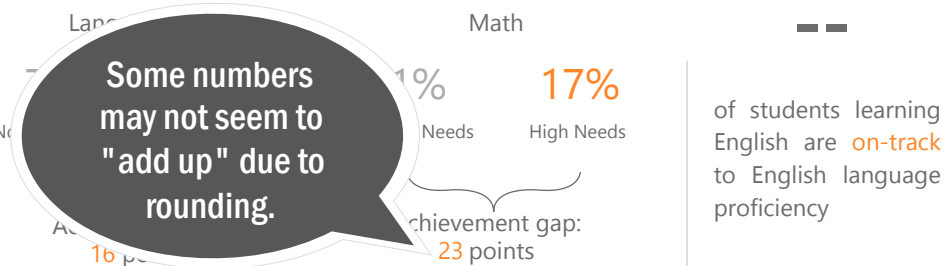


A double-hyphen indicates data are either missing or cannot be shown to protect students' privacy.



How are student subgroups performing?

High Needs: English learners, economically disadvantaged, and students receiving Special Education services. Non-High Needs: All other students.



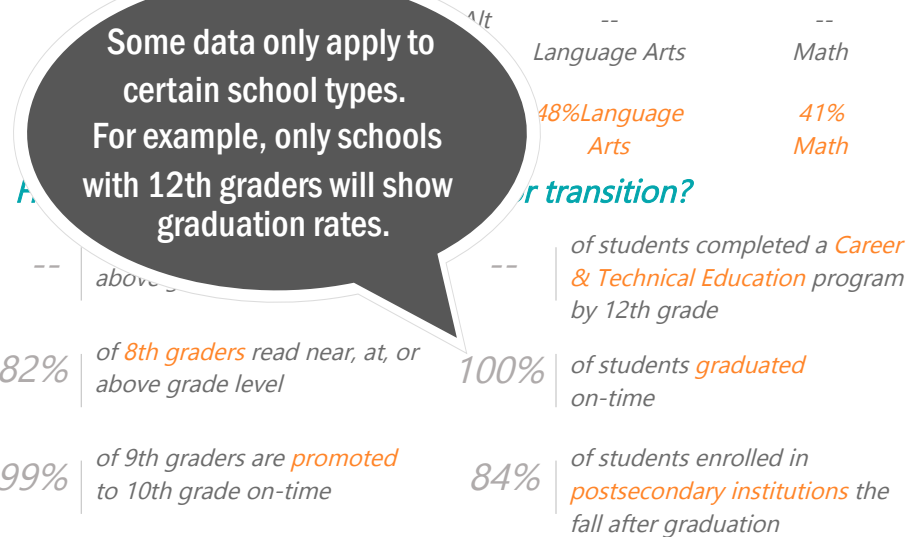
Some numbers may not seem to "add up" due to rounding.

¹2020 chronic absenteeism is based on absences only through the end of the third quarter (3/13/20). As such, the rate is not directly comparable with years prior to or following 2020, which were based on absences through May 1 of each school year.

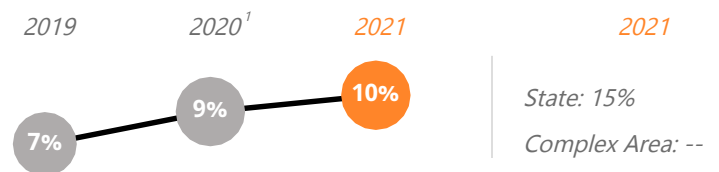


How are students' academic progress measured?

The Smarter Balanced test shows the relative progress of the average student on state assessments using a Median Growth Percentile (MGP) which ranges from 1-99. HSA-AIt & KA'EO tests show the percent of students making academic growth each year.



How many students missed 15 or more days of school this year?



How do students feel about their school?

Measures percent of students reporting positive school climate as measured by the Panorama Student Survey by school level.

